

place  
design  
group.

sam  
crawford  
architects



## LAHC WALLSEND - CURRY STREET

Prepared for

NSW LAND AND HOUSING  
CORPORATION

June 2022



# Contents

Extent of Works	03
Landscape Plan	04
Fencing Strategy	05
Landscape Key Plan and Sections	06
Planting Palette and Schedule	07
Material Schedule	08
Typical landscape details	09



Australia  
China  
South East Asia

Follow us on



[placedesigngroup.com](http://placedesigngroup.com)

Report title	47 - 49 Curry Street, Wallsend NSW 2287
Document number	2521028
Prepared for	Sam Crawford Architects
Authors	Georgia McDonald, Caleb Wright
Revision number	05
Revision issue date	23/06/2022
Approved	Nick Ison
Reason for revision	LAHC Comments

Disclaimer: This report has been prepared in accordance with the scope of services described in the contract or agreement between Place Design Group Pty Ltd ACN 082 370063 and the Client. The report relies upon data, surveys, measurements and results taken at or under the particular times and conditions specified herein. Any findings, conclusions or recommendations only apply to the aforementioned circumstances and no greater reliance should be assumed or drawn by the Client. Furthermore, the report has been prepared solely for use by the Client and Place Design Group accepts no responsibility for its use by other parties.

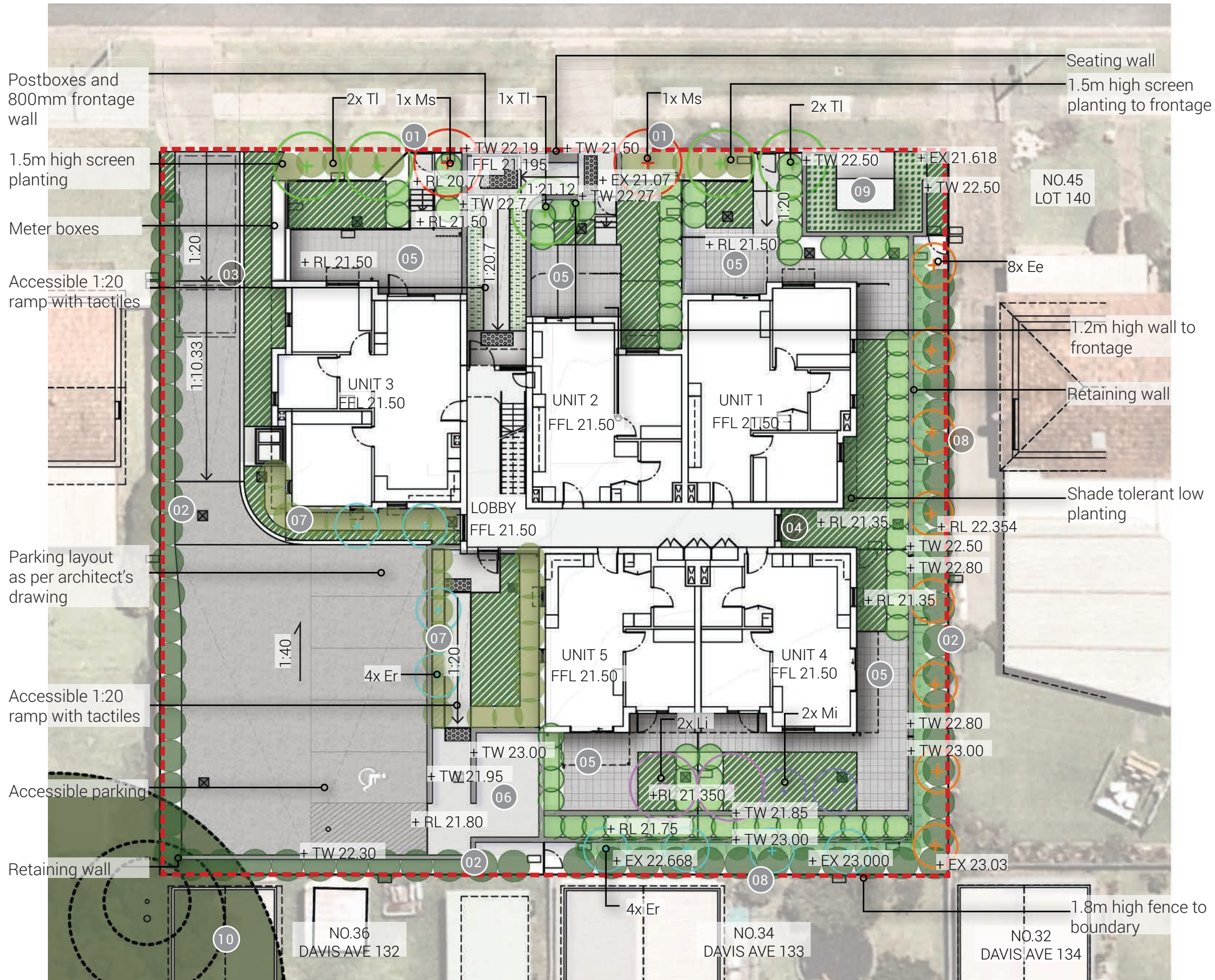
EXTENT OF WORKS














 Extent of works



# LANDSCAPE PLAN



**LEGEND:**

- |   |                    |   |   |
|---|--------------------|---|---|
|  | Extent of works    |  | <i>Syzygium australe</i>                        |
|  | Planting Mix 1     |  | <i>Melaleuca</i> 'Claret Tops'                  |
|  | Planting Mix 2     |  | <i>Callistemon viminalis</i>                    |
|  | Storm water pit    |  | <i>Callistemon</i> 'White Anzac'                |
|  | Paver to courtyard |  | <i>Myoporum parvifolium</i> (around substation) |
|  | Retaining wall     |   |   |

Note: refer to page 6 for information on tree species. Mass planting not to obstruct path of gates.

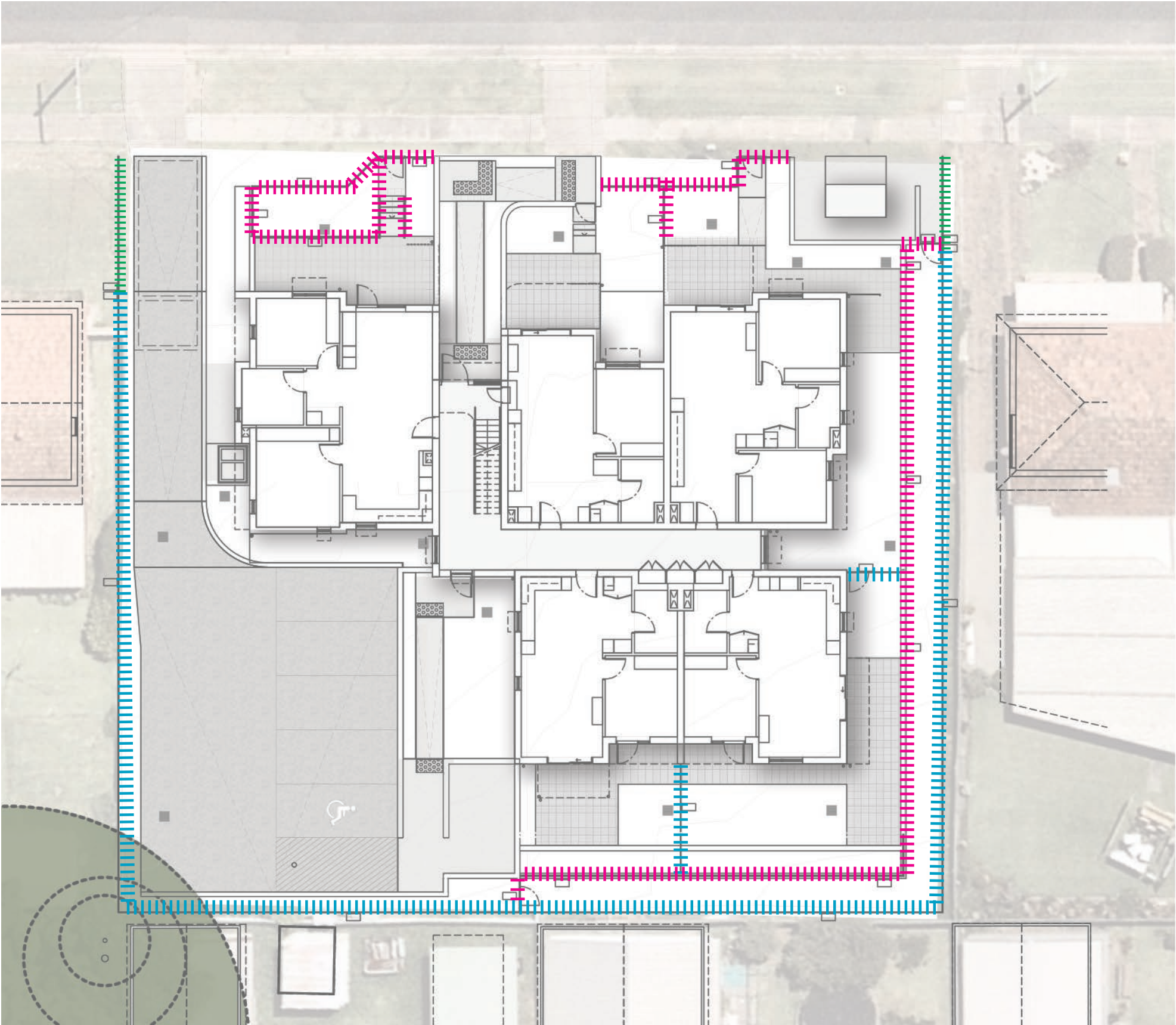
**NOTES:**

- 01 Feature tree to frontage entry
- 02 2m high hedging along site boundary for privacy
- 03 OSD and rainwater tank below
- 04 Shade tolerant low planting
- 05 Paved private open space
- 06 New bin store location
- 07 Screen hedging to car park
- 08 Tree to boundary (Screening)
- 09 Potential substation location
- 10 Existing trees to be retained





FENCING STRATEGY

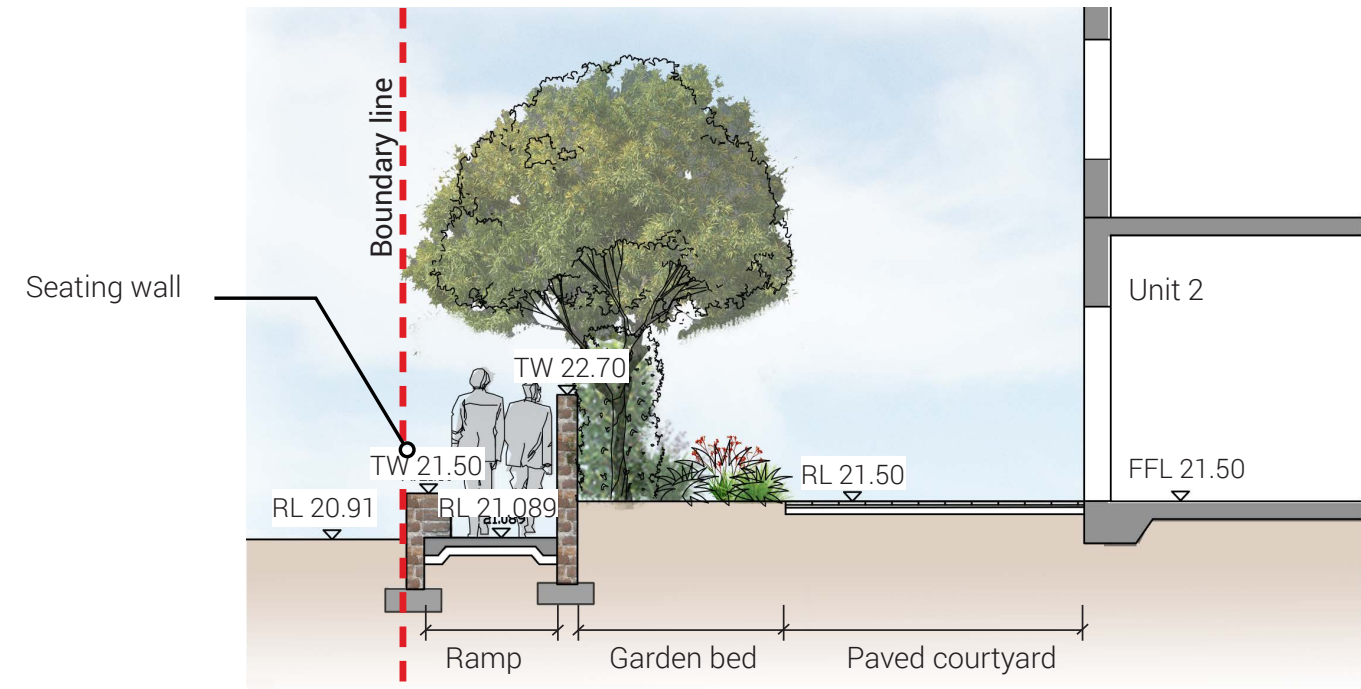


LEGEND:

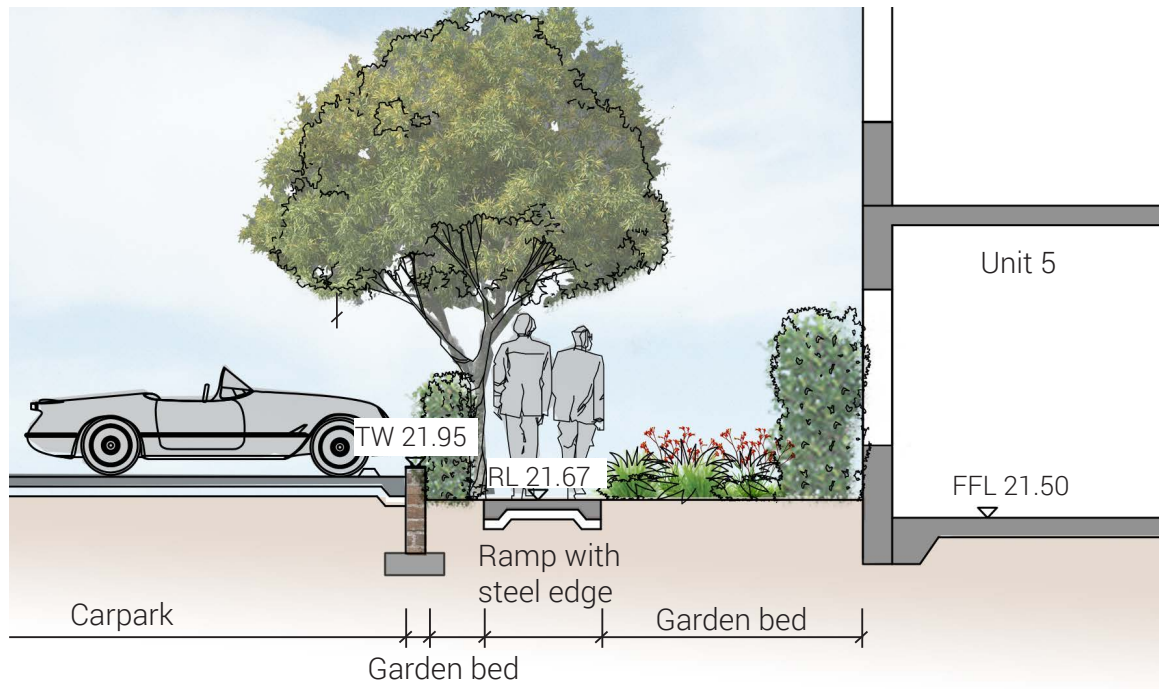
- ||||||| Fence Type 1: Colorbond fence (1800mm)
- ||||||| Fence Type 2: Aluminium palisade fence/gate (1200mm)
- ||||||| Fence Type 3: Aluminium palisade fence (800mm)



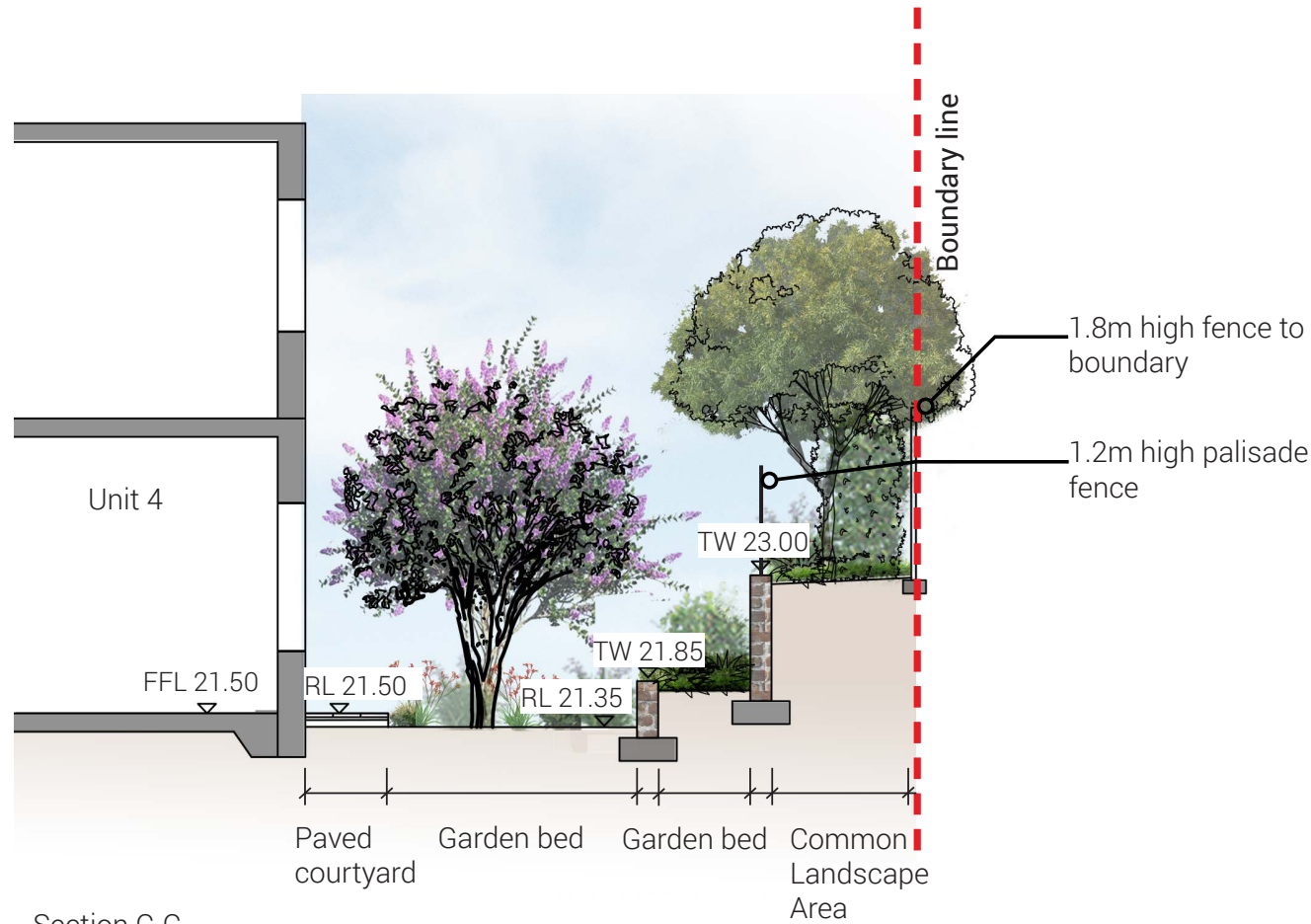
LANDSCAPE KEY PLAN AND SECTIONS



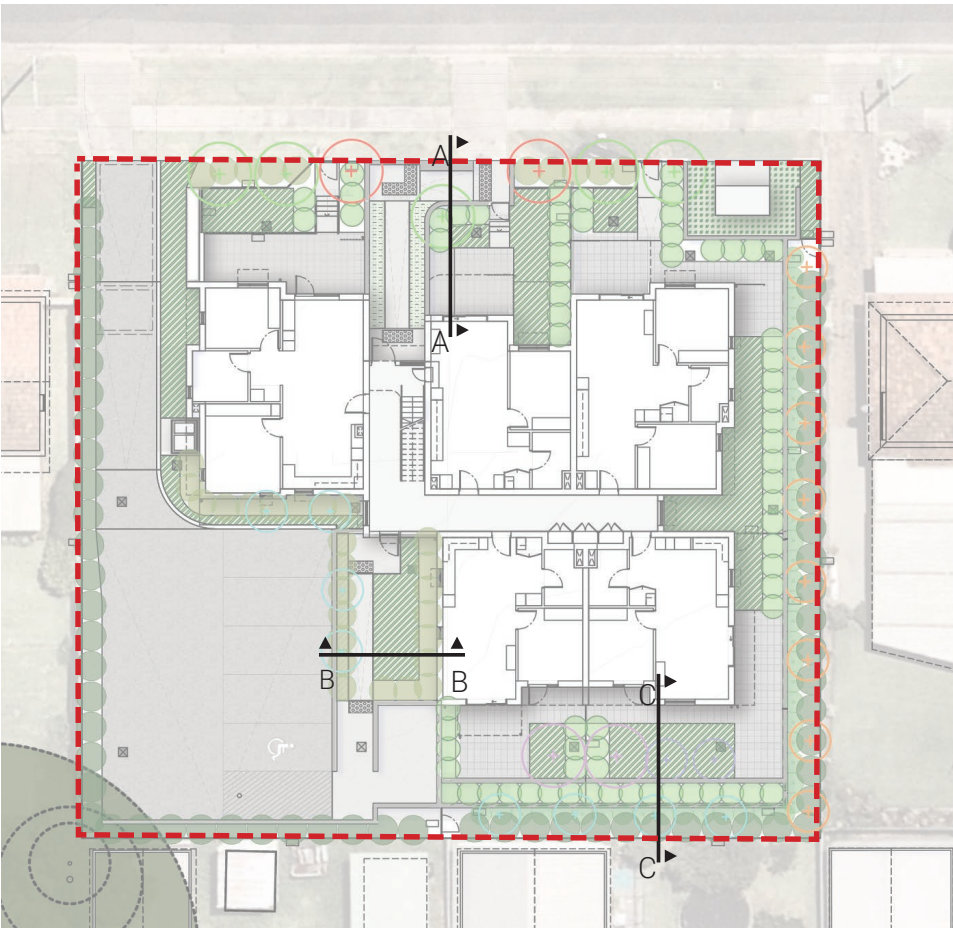
Section A-A



Section B-B



Section C-C



Key Plan



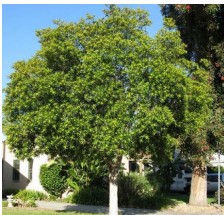
PLANTING SCHEDULE

LAHC_WALLSEND, CURRY STREET PLANTING SCHEDULE						
SYM	Botanical Name	Common Name	Mature Height	Pot Size	Spacing /m2	Quantity
TREES						
Ee	Elaeocarpus eumundi	Eumundi Quandong	10m	100L	As shown	8
Er	Elaeocarpus reticulatis 'Green Dream'	Blueberry Ash	3m	100L	As shown	8
Li	Lagerstroemia indica x fauriei 'Tuscarora'	Crepe Myrtle	6m	100L	As shown	2
Mi	Malus ioensis 'Plena'	Flowering Crab Apple	5m	100L	As shown	2
Ms	Melaleuca styphelioides	Prickly Paperbark	15m	100L	As shown	2
Tl	Tristaniopsis laurina 'Luscious'	Water Gum	12m	100L	As shown	5
SHRUBS						
Cv	Callistemon viminalis 'Captain Cook'	Weeping Bottlebrush	1.8m	150mm	As shown	35
Cwa	Callistemon 'White Anzac'	Bottlebrush 'White Anzac'	1m	150mm	As shown	44
Mct	Melaleuca 'Claret Tops'	Honey Myrtle	1m	150mm	As shown	69
Mp	Myoporum parvifolium	Boobialla	0.2m	150mm	1.5/linm	165
Sa	Syzygium australe	Brush Cherry	2m	200mm	As shown	62
Mix 1						
Clj	Callistemon 'Little John'	Bottlebrush 'Little John'	0.8m	150mm	6	11
Gt	Gazania tomentosa	Silver Leaf Gazania	0.2m	150mm	8	7
Lm	Liriope muscari 'Just Right'	Lilyturf	0.5m	150mm	6	11
Ll	Lomandra longifolia 'Tankia'	Mat Rush	0.6m	150mm	6	11
Od	Ozothamnus diosmifolius 'Coral Flush'	Rice Flower	1m	150mm	6	8
Pbb	Phormium 'Bronze Baby'	Dwarf New Zealand Flax	0.6m	150mm	6	8
Mix 2						
Dc	Dianella caerulea	Blue Flax-lily	1m	150mm	4	139
De	Doryanthes excelsa	Gynea Lily	2m	200mm	2	37
Lm	Liriope muscari 'Just Right'	Just Right	0.5m	150mm	6	208
Mp	Myoporum parvifolium	Boobialla	0.2m	150mm	8	149
Pp	Pandorea pandorana 'Flat White'	Wonga Wonga Vine	0.3m	150mm	8	149

TREES



Elaeocarpus eumundi



Tristaniopsis laurina 'Luscious'



Lagerstroemia indica x fauriei 'Tuscarora'



Elaeocarpus reticulatus 'Green Dream'



Malus ioensis 'Plena'



Melaleuca styphelioides

Shrubs - Hedging & Screening



Syzygium australe



Melaleuca 'Claret Tops'



Callistemon 'White Anzac'



Callistemon viminalis



Myoporum parvifolium

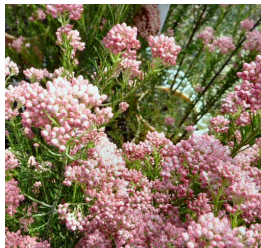
MIX 1 - Planting to entry



Liriope muscari 'Just Right'



Lomandra 'Tanika'



Ozothamnus diosmifolius 'Coral Flush'



Gazania tomentosa



Phormium 'Bronze Baby'



Callistemon 'Little John'

MIX 2 - Medium and low planting



Liriope muscari 'Just Right'



Pandorea pandorana 'Flat White'



Dianella caerulea





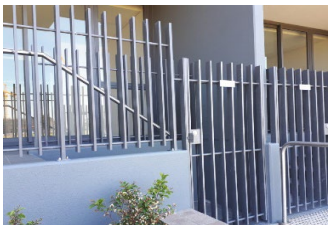
Doryanthes excelsa



Myoporum parvifolium

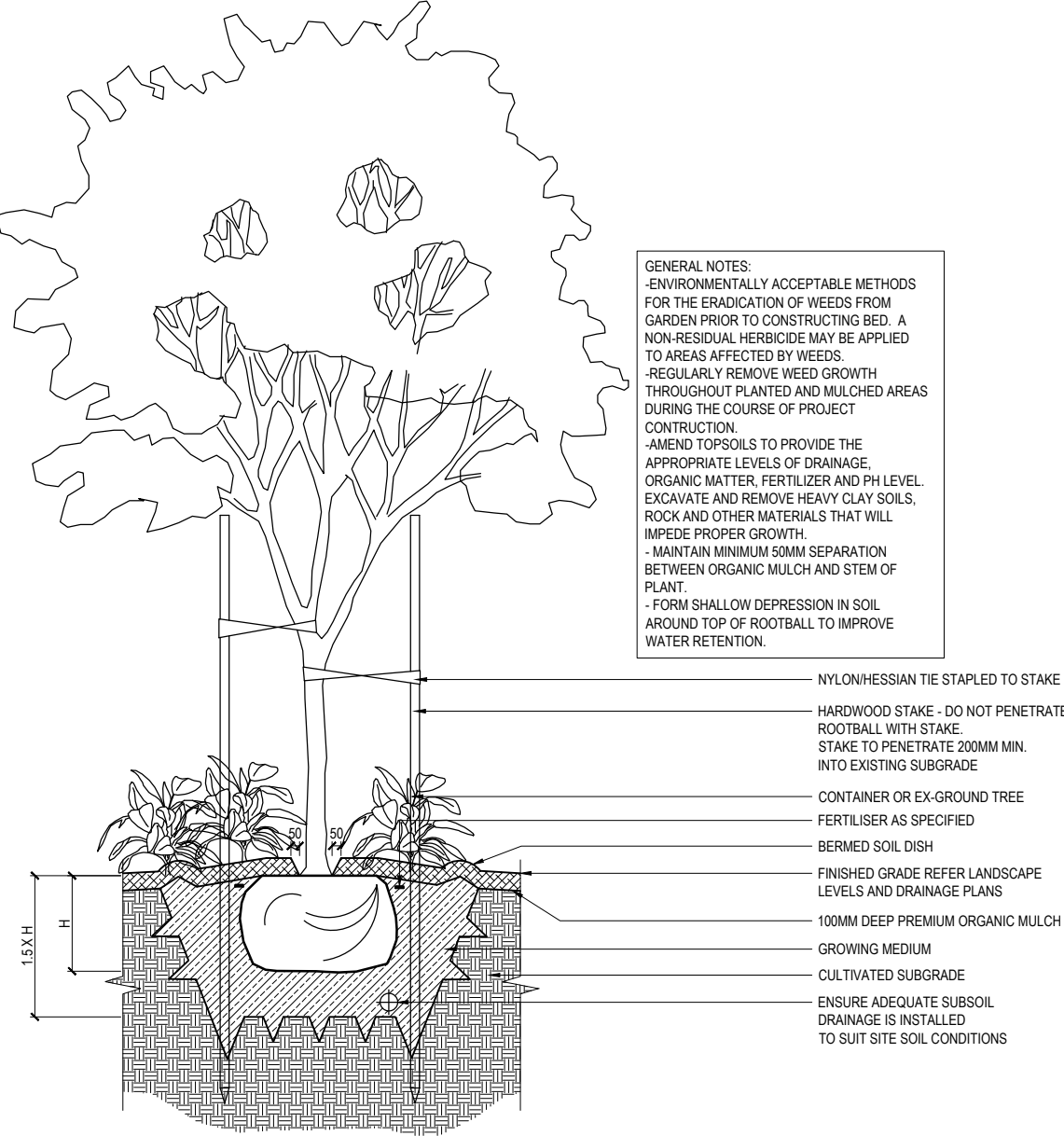


MATERIAL SELECTION

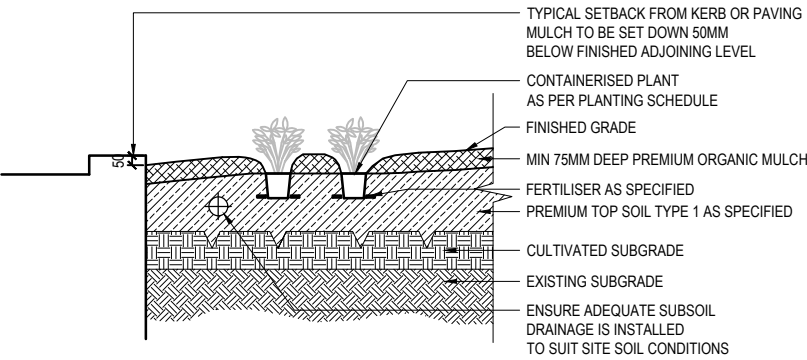
LAHC_CURRY STREET SELECTION SCHEDULE			
DESCRIPTION	DIMENSIONS	SPECIFICATION	IMAGE
FIXTURES AND FURNITURE			
FENCE TYPE 1	H: 1800mm	<b>Description:</b> Trimclad Colorbond steel fence <b>Panel dimension:</b> 2365mm L X 1800mm H <b>Color:</b> Monument grey <b>Fixing:</b> Refer to manufacture recommendation	
FENCE TYPE 2	H: 1200mm	<b>Description:</b> Vertica steel slate fence panel <b>Dimension:</b> 1200mm high <b>Fixing:</b> Refer to manufacture recommendation <b>Colour:</b> TBC+A9:E12	
FENCE TYPE 3	H: 800mm	<b>Description:</b> Vertica steel slate fence panel <b>Dimension:</b> 1800mm high <b>Fixing:</b> Refer to manufacture recommendation <b>Colour:</b> TBC	



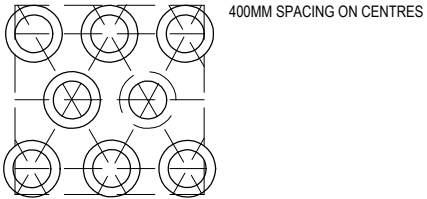
TYPICAL LANDSCAPE DETAILS



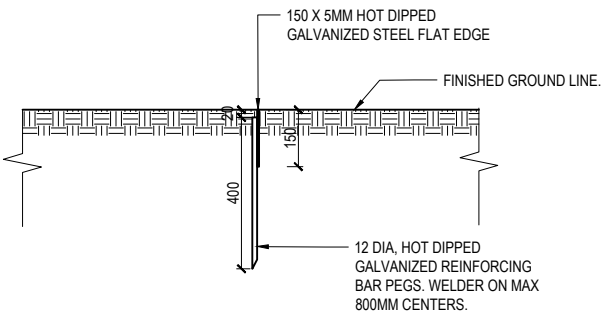
Detail 1: Tree Planting 1:40 @A3



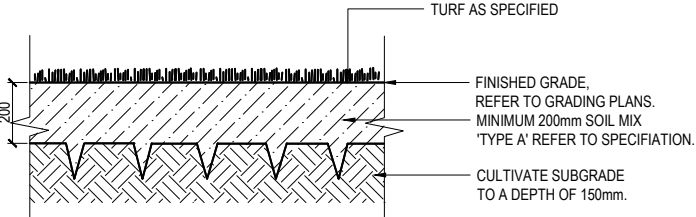
Detail 3: Mass Planting Detail 1:40 @A3



Mass Planting Layout Detail 1:40@A3



Detail 2: Steel Edge Detail 1:20 @A3



Detail 4: Typical Turf Detail 1:20 @A3